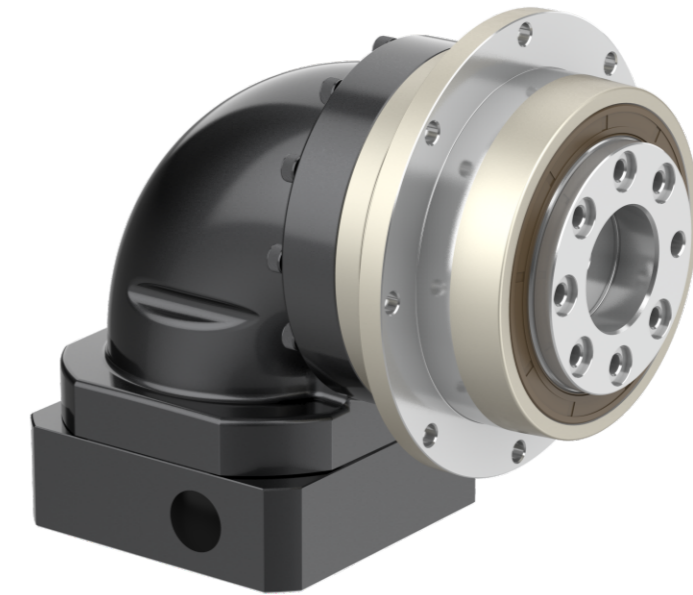


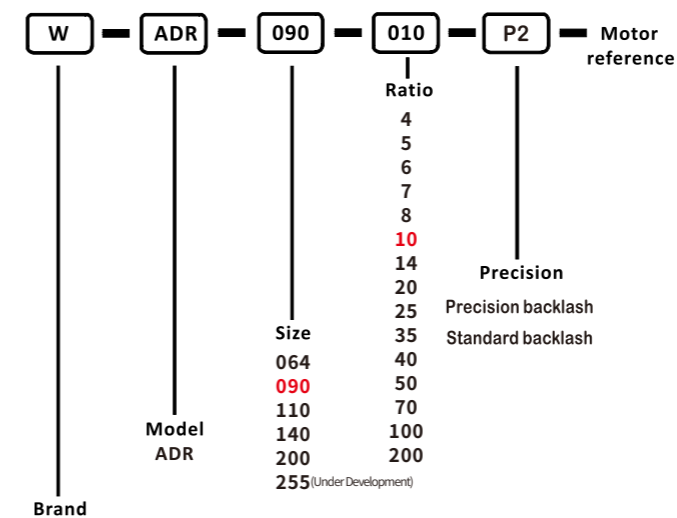
WADR Series Planetary Gearbox

FEATURES

- » Planet gear carrier and output shaft are integrated structure designed to ensure maximum torsional rigidity.
- » Planet gear with full needle design, increase the contact area to improve the rigidity and output torque.
- » The gears are carburized and quenched to the HRC62 with low carbon steel surface for optimum wear and impact toughness.
- » Gears refer to foreign imported software-assisted design to obtain the best tooth shape to reduce noise.
- » Adopt spiral bevel gear design, allow high output torque, more than 30% higher than straight bevel gear.
- » High allowable input speed, more than 8 times higher than straight bevel gear input.
- » The meshing tooth imprint of spiral bevel gear has been optimized by optimum design, thus ensuring even load on the contact tooth surface and a long service life.
- » Spiral bevel gears are meshed by optimum motion error analysis and strict process control to ensure high precision running backlash.



SELECTION



GENERAL NOTICES

- Type, model and torque
- Ratio or output speed
- Working conditions and connection methods
- Quantity and installed machine name
- Input mode and input speed
- Motor brand model or flange and motor shaft size

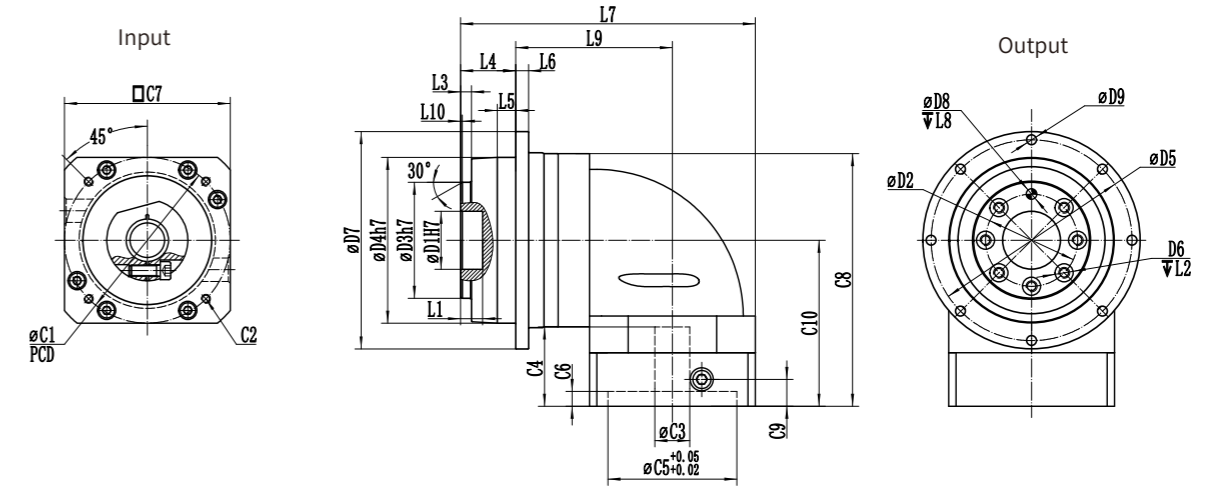
PLANETARY GEARBOX

Performance

Specification	Unit	Stage	Ratio	WADR064	WADR090	WADR110	WADR140	WADR200	WADR255
Rated output torque T_{2N}	Nm	1	4	48	130	270	560	1100	-
			5	60	160	330	650	1200	-
			6	50	140	300	550	1100	-
			7	50	140	300	550	1100	-
			8	48	130	270	560	1100	-
			10	60	160	330	650	1200	-
			14	50	140	300	550	1100	-
		2	20	40	100	230	450	900	-
			25	60	160	330	650	1200	-
			35	50	140	300	550	1100	-
			40	48	130	270	560	1100	-
			50	60	160	330	650	1200	-
			70	50	140	300	550	1100	-
			100	60	160	330	650	1200	-
140	50	140	300	550	1100	-			
200	40	100	230	450	900	-			
Emergency stop torque T_{2NOT}	Nm	1,2	4~200	Triple rated output torque					
Rated input speed Π_{1N}	rpm	1,2	4~200	5000	4000	4000	3000	3000	-
Maximum input speed Π_{1B}	rpm	1,2	4~200	10000	8000	8000	6000	6000	-
Precision backlash P_1	arcmin	1	4~20	≤ 5	≤ 5	≤ 5	≤ 5	≤ 5	-
		2	25~200	≤ 7	≤ 7	≤ 7	≤ 7	≤ 7	-
Standard backlash P_2	arcmin	1	4~20	≤ 7	≤ 7	≤ 7	≤ 7	≤ 7	-
		2	25~200	≤ 10	≤ 10	≤ 10	≤ 10	≤ 10	-
Torsional rigidity	Nm/arcmin	1,2	4~200	13	31	82	151	440	-
Maximum bending torque M_{2KB}	Nm	1,2	4~200	125	235	430	1300	3064	-
Allowable axial force F_{2aB}	N	1,2	4~200	1050	2850	2990	10590	16660	-
Lifespan	hr	1,2	4~200	20000					
Efficiency	%	1		$\geq 95\%$					
		2		$\geq 92\%$					
Weight	kg	1	4~20	1.9	4.5	9.8	20.1	46.6	-
		2	25~200	2.1	5.9	10.5	21.9	53.9	-
Use of temperature	°C	1,2	4~200	-20°C~+40°C					
Lubricating				Synthetic lubricating grease					
IP Grade		1,2	4~200	IP65					
Installation direction		1,2	4~200	In any direction					
Noise level ($n_1=3000\text{rpm}$, off load)	dB(A)	1,2	4~200	≤ 63	≤ 65	≤ 68	≤ 70	≤ 72	-

Rotational inertia

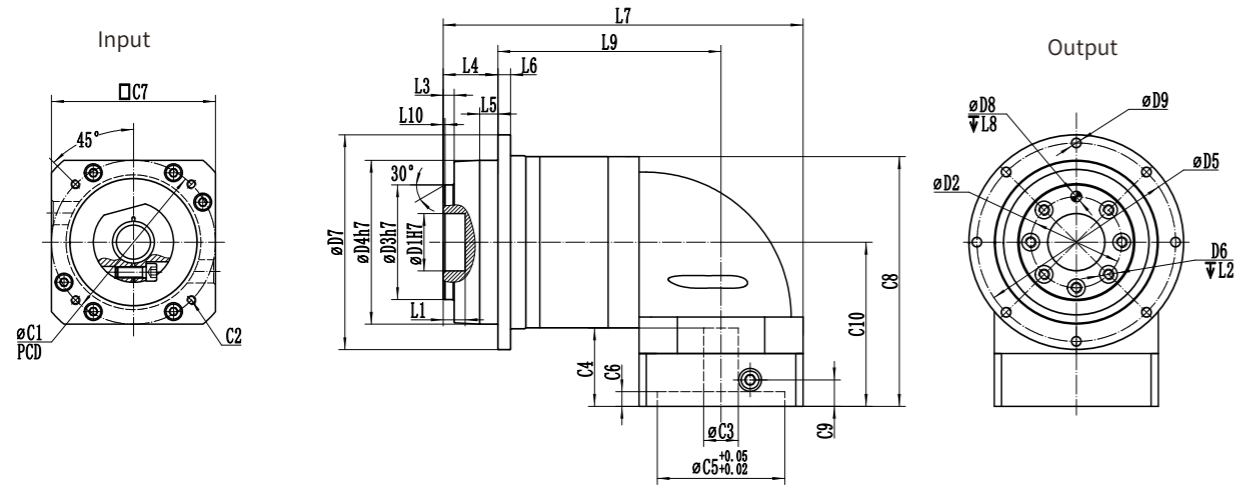
Specification	Unit	Stage	Ratio	WADR064	WADR090	WADR110	WADR140	WADR200	WADR255
Rotational inertia J_1	kg·cm²	1	4~10	0.35	2.25	6.84	23.4	-	-
			14	0.07	1.87	6.25	21.8	-	-
			20	0.07	1.87	6.25	21.8	-	-
		2	25~100	0.09	0.35	2.25	6.84	-	-
			140~200	-	0.31	1.87	6.25	-	-



DIMENSION SINGLE SECTION

Dimension(single stage, Ratio i=4~20)

Dimension	WADR064	WADR090	WADR110	WADR140	WADR200	WADR255
D1H7	20	31.5	40	50	80	-
D2	31.5	50	63	80	125	-
D3h7	40	63	80	100	160	-
D4h7	64	90	110	140	200	-
D5	79	109	135	168	233	-
D6	7-M5	7-M6	11-M6	11-M8	11-M10	-
D7	86	118	145	179	247	-
D8H7	5	6	6	8	10	-
D9	8-4.5	8-5.5	8-5.5	12-6.6	12-9	-
L1	8	12	12	12	16	-
L2	9	12	12	17	23	-
L3	3	6	6	6	8	-
L4	19.5	30	29	38	50	-
L5	7	10	10	14.6	15	-
L6	4	7	8	10	12	-
L7	113.2	160	187	241.5	301.5	-
L8	6	7	7	7	10	-
L9	63.7	85	100.5	132.5	161.5	-
L10	0.5	1	1	1	1.5	-
C1	70	90	145	200	200	-
C2	4-M4	4-M5	4-M8	4-M12	4-M12	-
C3	14	19	24	35	42	-
C4	35	43	71	86	119	-
C5	50	70	110	114.3	114.3	-
C6	5	8	14	19	15	-
C7	60	90	130	180	180	-
C8	103.9	137.1	189	237.5	300.5	-
C9	11.5	14.5	27	32	65	-
C10	71.9	90.1	126.5	162.5	162.5	-



DIMENSION

SINGLE SECTION

Dimension(double stage,Ratio i=25~200)

Dimension	WADR064	WADR090	WADR110	WADR140	WADR200	WADR255
D1H7	20	31.5	40	50	80	-
D2	31.5	50	63	80	125	-
D3h7	40	63	80	100	160	-
D4h7	64	90	110	140	200	-
D5	79	109	135	168	233	-
D6	7-M5	7-M6	11-M6	11-M8	11-M10	-
D7	86	118	145	179	247	-
D8H7	5	6	6	8	10	-
D9	8-4.5	8-5.5	8-5.5	12-6.6	12-9	-
L1	8	12	12	12	16	-
L2	9	12	12	17	23	-
L3	3	6	6	6	8	-
L4	19.5	30	29	38	50	-
L5	7	10	10	14.6	15	-
L6	4	7	8	10	12	-
L7	145.2	197.5	232	302.5	339	-
L8	6	7	7	7	10	-
L9	95.7	122.5	145.5	193.5	199	-
L10	0.5	1	1	1	1.5	-
C1	70	90	145	200	200	-
C2	4-M4	4-M5	4-M8	4-M12	4-M12	-
C3	14	19	24	35	42	-
C4	35	43	71	86	119	-
C5	50	70	110	114.3	114.3	-
C6	5	8	14	19	15	-
C7	60	90	130	180	180	-
C8	103.9	137.1	189	237.5	300.5	-
C9	11.5	14.5	27	32	65	-
C10	71.9	90.1	126.5	162.5	162.5	-

WANSHSIN Seikou(Hunan)Co., Ltd.



WANSHSIN is a professional gearbox, gear motor and inverter manufacturer and intelligent automation complete solution provider, integrating R&D, production, sales and service. The products cover the light and heavy industry, are widely used in new energy, robots, automobile manufacturing, warehousing, logistics, food industry and other industries. WANSHSIN has gradually become a reliable long-term partner of those leading enterprises of relevant industries.

Enterprise Honor

2019	2020	2022
<ul style="list-style-type: none"> National high-tech enterprise 	<ul style="list-style-type: none"> Ministry of Industry and Information Technology of the People's Republic of China "specialized, special and new" key small giant enterprise Hunan Enterprise Technology Center 	<ul style="list-style-type: none"> 2022 Hunan Reducer Engineering Technology Research Center 2022 The 2nd Ningxiang Mayor Quality Award(Organization)

Core Competitiveness



Leading R&D Capability

Three major R&D centers have been established to lead the industry's high-quality development with innovation.

Excellent Quality

We are the pioneer in introducing and launching the advanced automotive industry quality control standards pre-planning of product quality and have equipped with a large number of imported international advanced inspection/testing equipment to ensure product quality.

Advanced Manufacturing

We have hundreds of domestic advanced processing equipment with a total value of more than 100 million yuan, and our capacity is in a leading position in China.

Fast Delivery

Sufficient spare parts in warehouse to ensure very short lead time.